



Spokane International Airport Rail-Truck Transload Center is a 305-acre site in Spokane, Washington, in the City of Spokane. Spokane International Airport Rail-Truck Transload Center has access to BNSF Railway and has received certification as part of BNSF Railway's Site Certification program. BNSF certification ensures a site is ready for rapid acquisition and development through a comprehensive evaluation of existing and projected infrastructure, environmental and geotechnical standards, utility evaluation and site availability.

SELECTING A CERTIFIED SITE CAN:

- Reduce development time
- Increase speed to market
- Reduce upfront development risk of rail-served industrial sites

PROPERTY DETAILS

This expansive site, adjacent to Spokane International Airport, offers 305 acres zoned light industrial with room to expand. As an added benefit, there is an existing truck-rail transload facility with existing infrastructure already on site.

Site Details:

- 305 acres available for development
- Direct access to BNSF
- Zoned for Light Industrial
- Near Spokane International Airport
- 2 miles from Interstate 90



CONTACT INFORMATION

BNSF Regional Manager

John Adams

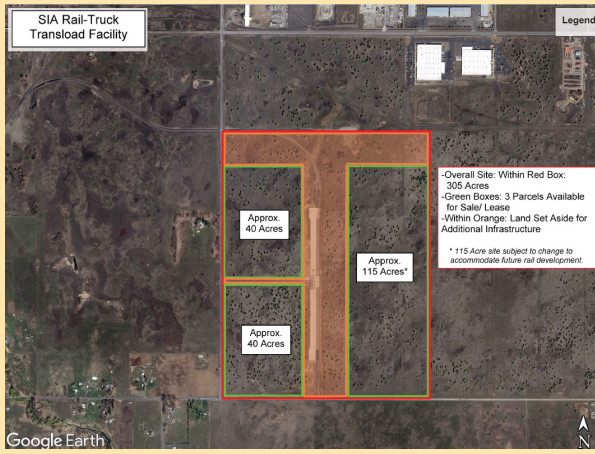
206.625.6355

John.Adams2@BNSF.com

Director, Marketing & Public Affairs

Todd Woodard

twoodard@spokaneairports.net



SITE PROFILE

Land Area	305 acres
Zoning	Light Industrial
Price	Available upon request

UTILITIES

Electric	Inland Power
Gas	Avista
Water	City of Spokane
Wastewater	City of Spokane
Telecommunications	Lumen

DEMOGRAPHICS

Spokane is a community in the Spokane-Spokane Valley Metropolitan area. As of the 2023 census estimates, the population of the MSA was 551,455.

POPULATION

City of Spokane	
Census population	229,447
Total Population	504,549
Working Population	326,772

WORKFORCE

City of Spokane	
Total Employment	204,235
Annual Mean Wage	\$63,316

BNSF PREMIER PARKS, SITES AND TRANSLOAD PROGRAM

BNSF Certified Sites are a part of the Premier Parks, Sites and Transload program which is a strategic approach to addressing the increasing demand for customer site locations by developing various types of facilities across the BNSF network. BNSF Certified Sites have been reviewed by an industry expert in order to ensure accurate, reliable data. Our goal is to provide an inventory of rail-served sites that are available for immediate development.*

* In order to ensure a safe, efficient and economical switch operation, BNSF will want to review and approve the engineering plans to serve each tenant facility.