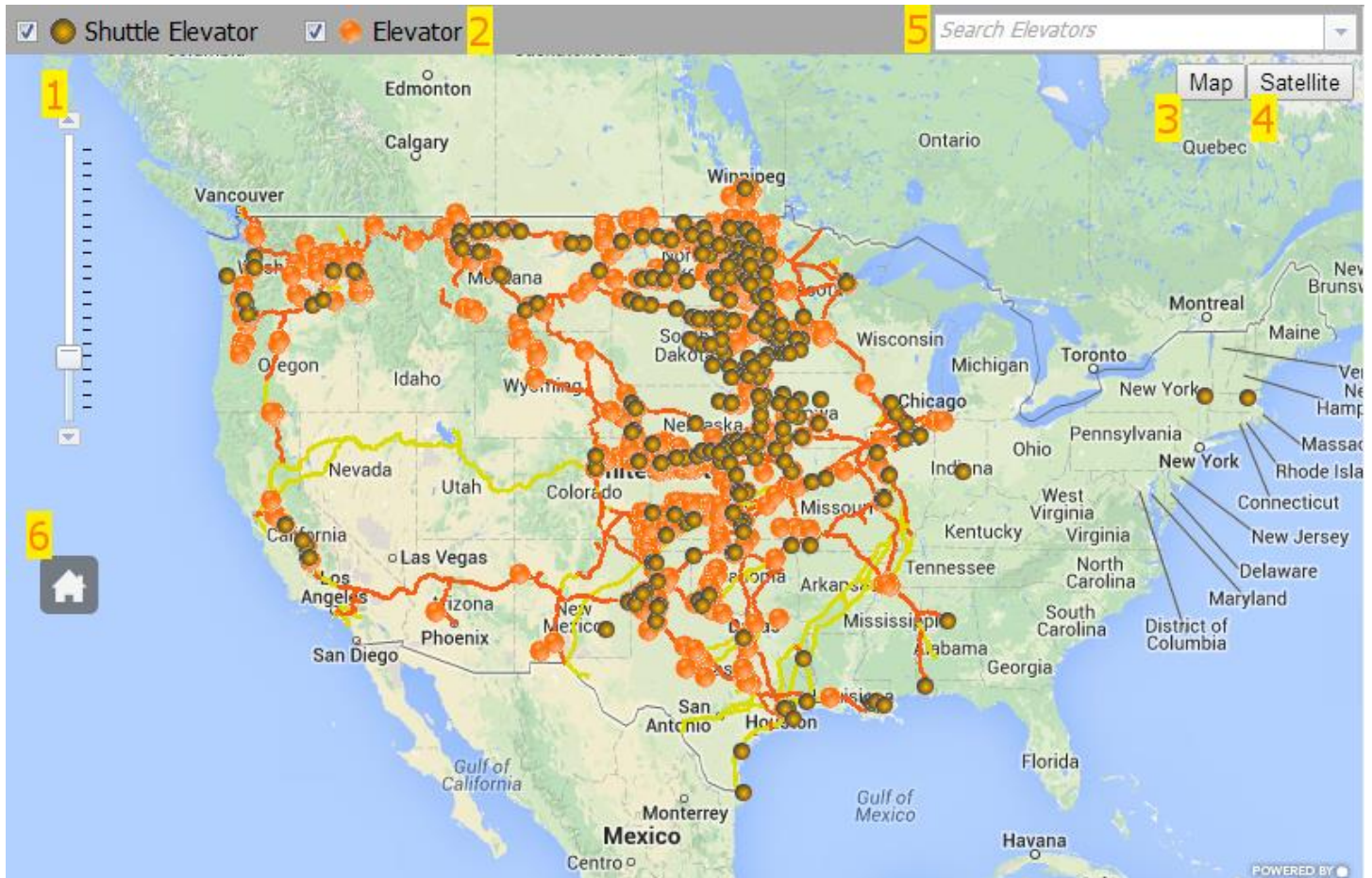


SHUTTLE DIRECTORY MAP INSTRUCTIONS

THE BASICS



PARTS OF THE SCREEN:

1. Zoom Control – Click the arrows or drag the slider button to zoom in or out.
2. Legend – Shows which icon represents each type of elevator. The checkboxes turn on and off the elevator types.
3. Map Button – Click to show the street map. This is the default view.
4. Satellite Button – Click to show satellite imagery.
5. Search Field – Search elevators by name or elevator number. The drop down arrow button and scroll bar feature can be used to browse through the list of elevators.
6. Home Button – Click to zoom the map to the continental USA.

The rest of the screen is called the map surface.

NAVIGATION

The map may be moved around and zoomed in and out as you desire.

MOVING THE MAP

Click and hold down the left mouse button anywhere on the map surface and then move the mouse to position the map. The arrow keys will also move the map in the direction of the arrow.

ZOOMING THE MAP

The map may be zoomed in three ways.

1. Use the zoom control.
2. Use the mouse wheel. Rolling forward on the mouse wheel moves your view closer to the Earth.
3. Zoom to a particular area. Hold down the Shift key and then click and drag with the left mouse button to draw a box. The map will zoom to the area represented by the box.

SEARCHING THE MAP

The map may be searched in three ways.

1. Type in the elevator number (entire number or portion of the number).
2. Type in the elevator name (entire name or portion of the name).
3. Click on the down arrow button to see the entire list of elevators and use the scroll bar to search the list of elevators.

INTERACTING WITH THE MAP

1. When the map is first loaded, the icons representing the elevators are small and do not show any information when you mouse over or click them. In figure 1, notice the mouse cursor is over an elevator in South Dakota and no information is shown.

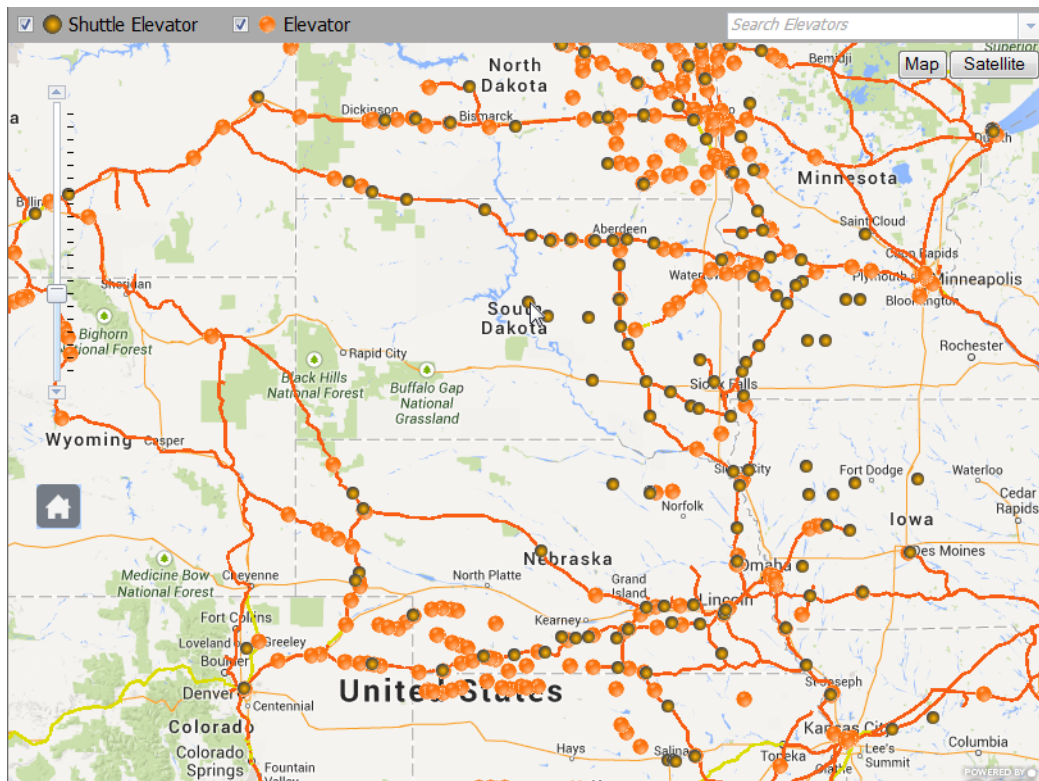


Figure 1

2. Zoom in several levels until the icons are larger, see Figure 2. You can now mouse over an icon to see elevator name.

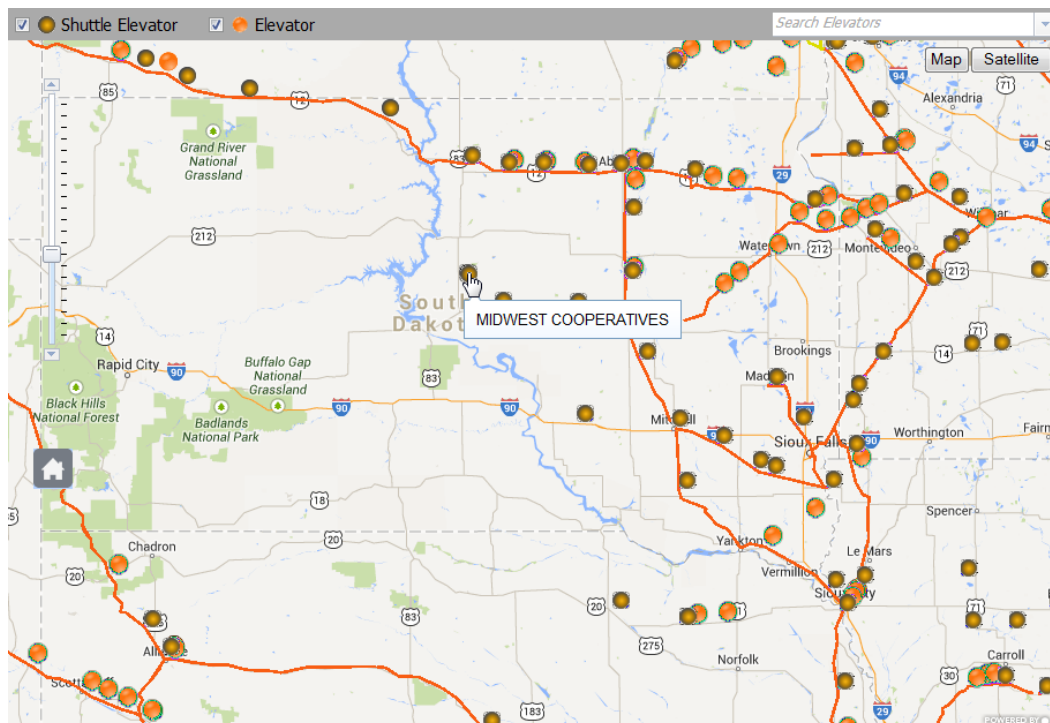


Figure 2

3. To pull up further details of the elevator, click the icon. See Figure 3.

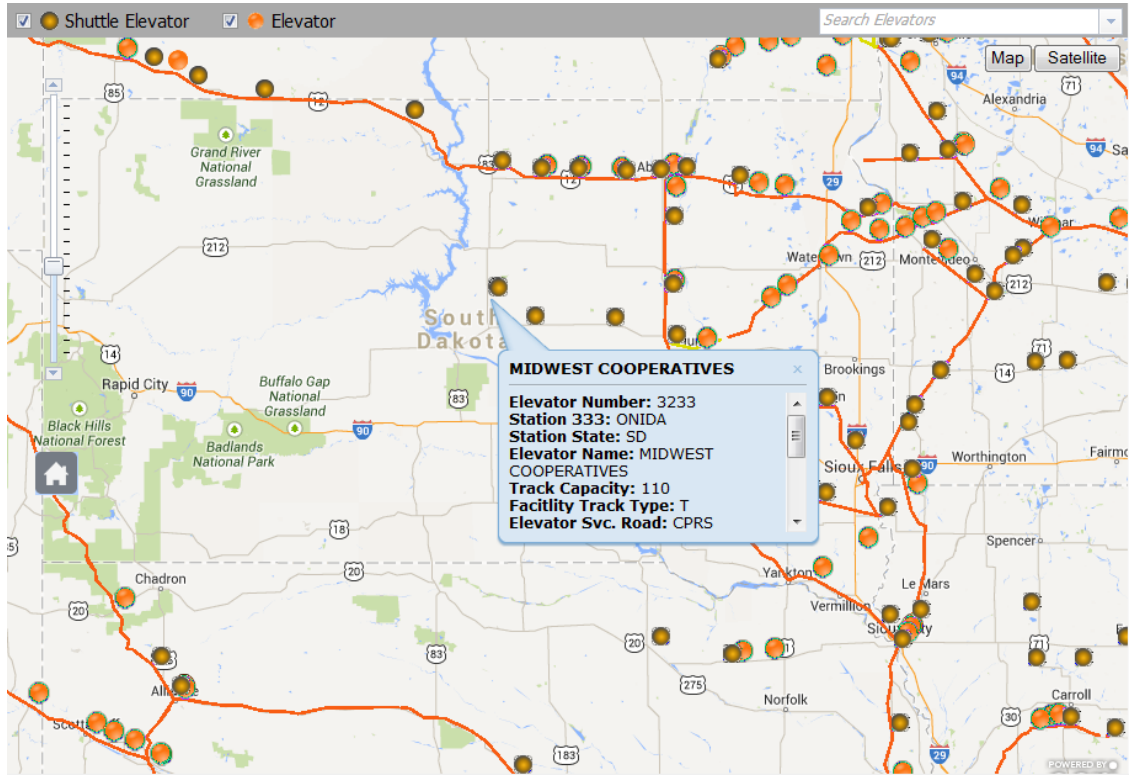


Figure 3